

John Deere

CLICK ANYWHERE FOR MORE DETAILS

MODEL:

2440 & 2640

S/n 341,000 & Up

MANUAL PREVIEW

JENSALES

OPERATOR'S
MANUAL



purchase full manual

JENSALES.COM

or Call 800-443-0625



CLICK ANYWHERE FOR MORE DETAILS

THIS IS A MANUAL PRODUCED BY JENSALES INC. WITHOUT THE AUTHORIZATION OF JOHN DEERE OR IT'S SUCCESSORS. JOHN DEERE AND IT'S SUCCESSORS ARE NOT RESPONSIBLE FOR THE QUALITY OR ACCURACY OF THIS MANUAL.

TRADE MARKS AND TRADE NAMES CONTAINED AND USED HEREIN ARE THOSE OF OTHERS, AND ARE USED HERE IN A DESCRIPTIVE SENSE TO REFER TO THE PRODUCTS OF OTHERS.

JD-O-OMR70798

Make: John Deere	Model: 2440	Years Made: 1976-1982
HP-PTO: 60.62	HP-Engine:	HP-Drawbar: 52.3
HP-Range: 61	Engine-Make: JD	Engine-Fuel: DIESEL
Engine-Cyl(s)-CID: 4/219	Transmission-STD: SG	Optional: HI-LO
Fwd/Rev Standard: 8/4	Fwd/Rev Optional: 16/8	Mfwd-Std/Opt:
Tires-Std Front: 6.00-16	Tires-Std Rear: 16.9-28	Wheelbase-Inch: 87.8
Pto Type: IND	Pto Speed: 540/1000	CAT I-3pt Hitch: False
CAT II-3pt Hitch: True	CAT III-3pt Hitch: False	Hitch Lift:
Hydraulics-Type: CLOSED	Hyd-Cap: 10	Hyd-Flow: 6
Hyd Std Outlets:	Cooling Capacity: 12	Fuel Tank Capacity: 19.5
Cab-Std A/C; Rops:	Weight: 4750	New Price: 18583

RIGHT SIDE OF TRACTOR FRAME	
Year	Beginning Serial Number
1976	235210
1977	258106
1978	280789
1979	305501
1980	341000
1981	362173
1982	376746

Paint Codes	
Location	MFG Color Name
Body	NEW AG GREEN
Wheels & Trim	Classic Yellow

Make: John Deere	Model: 2640	Years Made: 1976-1982
HP-PTO: 70	HP-Engine:	HP-Drawbar:
HP-Range: 70	Engine-Make: JD	Engine-Fuel: DIESEL
Engine-Cyl(s)-CID: 4/276	Transmission-STD: SG	Optional: HI-LO
Fwd/Rev Standard: 8/4	Fwd/Rev Optional: 16/8	Mfwd-Std/Opt:
Tires-Std Front: 6.00-16	Tires-Std Rear: 16.9-28	Wheelbase-Inch: 87.8
Pto Type: IND	Pto Speed: 540/1000	CAT I-3pt Hitch: False
CAT II-3pt Hitch: True	CAT III-3pt Hitch: False	Hitch Lift:
Hydraulics-Type: CLOSED	Hyd-Cap: 10	Hyd-Flow: 6
Hyd Std Outlets:	Cooling Capacity: 12	Fuel Tank Capacity: 19.5
Cab-Std A/C; Rops:	Weight: 4930	New Price: 21150

RIGHT SIDE OF TRACTOR FRAME	
Year	Beginning Serial Number
1976	235313
1977	258106
1978	280789
1979	305505
1980	341000
1981	362175
1982	376744

Paint Codes	
Location	MFG Color Name
Body	CLASSIC GREEN®
Wheels & Rims	Classic Yellow

JENSALES.COM

or Call 800-443-0625

CLICK ANYWHERE FOR MORE DETAILS

CLICK ANYWHERE FOR MORE DETAILS

**2440 and 2640
Tractors
(Serial No. 341,000-)**

MANUAL PREVIEW

OPERATORS MANUAL
2440 and 2640 Tractors
(Serial No. 341,000-)

OMR70798 Issue G0 English

JENSALES®

purchase full manual at

JENSALES.COM
or Call 800-443-0625

CLICK ANYWHERE FOR MORE DETAILS

John Deere Waterloo Works
OMR70798 Issue G0


LITHO IN U.S.A. (REVISED)
ENGLISH

INTRODUCTION

IMPORTANT WARRANTY INFORMATION

The warranty on this tractor appears on your copy of the purchase order which you should have received from your dealer when making your purchase. This warranty provides you the assurance that John Deere will back its products where defects appear within the warranty period. In some circumstances, John Deere also provides field improvements, often without charge to the customer, even if the product is out of warranty.

Warranty and field improvements are a part of John Deere's product support program for customers who operate and maintain their equipment as described in this manual. Should the equipment be abused, or modified to change its performance beyond the original factory specifications, the warranty will become void and field improvements may be denied. Setting fuel delivery above specifications or otherwise overpowering machines will result in such action.

 This safety alert symbol indicates important safety messages in this manual. When you see this symbol, be alert to the possibility of personal injury and carefully read the message that follows.



Worldwide symbols are used to assist identification and operation. In this manual, an identifying symbol is placed by the instructions like the example at left for the symbol on the engine oil pressure gauge. The cylinder block in the symbol represents the engine, the drop signifies oil, and the arrows indicate pressure. Regardless of the language used in a nation, this symbol means engine oil pressure without translation.

This operator's manual contains SI Metric equivalents which follow immediately after the U.S. customary units of measure.

"Right-hand" and the "left-hand" sides of the tractor are determined by facing in the direction of tractor forward travel.

Record your tractor serial numbers on page 138. Provide this information to your dealer when ordering parts.



R79171X1

John Deere 2440 Tractor

Contents

CLICK ANYWHERE FOR MORE DETAILS

Safety	2
Controls and Instruments	5
Operator's Station	9
Engine Break-in	11
Prestarting Checks	12
Operating the Engine	14
Operating the Tractor	22
Rockshaft and Three-Point Hitch	28
Remote Hydraulic Cylinders	47
Drawbar and PTO	58
Ballast	69
Wheels, Tires, and Tread	75
Transporting	88
Lighting and Signals	91
Fuels and Lubricants	94
Lubrication and Maintenance	96
Service	107
Storage	128
Trouble Shooting	131
Specifications	136
Index	139
Daily Maintenance	147
Lubrication and Maintenance Record	147

MANUAL PREVIEW

JENSALES

purchase full manual at

JENSALES.COM
or Call 800-443-0625

CLICK ANYWHERE FOR MORE DETAILS

ENGINE SPEEDS



- A—Slow Idle
- B—PTO Rated
- C—PTO Max
- D—Full Throttle-Full Load
- E—Full Throttle-No Load

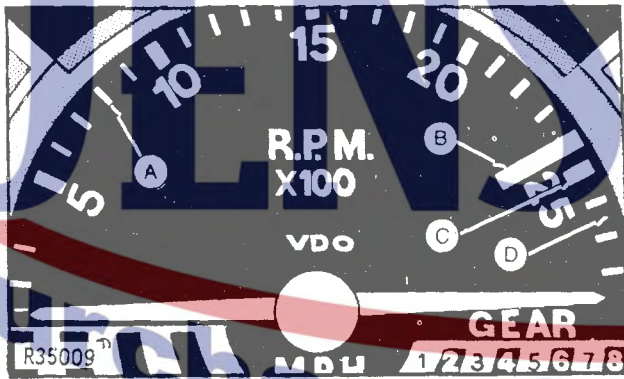
Tractors Without Hi-Lo

Slow idle should be 800 rpm (A). Full throttle speed at full load should be 2500 rpm (D). At light or no load, full throttle speed may increase to 2650 rpm (E).

Normal working range is 1500 to 2500 rpm. Any speed in this range is acceptable.

On tractors without Hi-Lo transmission, run engine at 2100 rpm "PTO Rated" mark (B) for standard PTO speed. "PTO Max" mark (C) at 2400 rpm indicates a 10 percent PTO overspeed.

IMPORTANT: Never exceed 2400 rpm when PTO is engaged.



- A—Slow Idle
- B—PTO Speed
- C—Full Throttle-Full Load
- D—Full Throttle-No Load

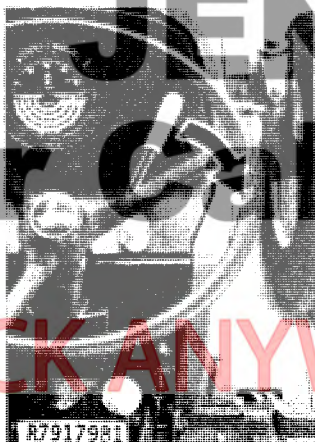
Tractors With Hi-Lo

Slow idle should be 800 rpm (A). Full throttle speed at full load should be 2500 rpm (C). At light or no load, full throttle speed may increase to 2650 rpm (D).

Normal working range is 1500 to 2500 rpm. Any speed in this range is acceptable.

On tractors with Hi-Lo transmission, run engine at 2400 rpm (B) for standard PTO SPEED.

IMPORTANT: Never exceed 2400 rpm when PTO is engaged.



Hand Throttle



Foot Throttle

To increase speed, pull throttle downward.

To temporarily increase engine speed above hand throttle setting, depress foot throttle.

800-443-0625

CLICK ANYWHERE FOR MORE DETAILS

6. Run engine until it reaches normal temperature. Cycle all hydraulic functions including steering and brakes.



7. Drain fuel tank and add 5 ounces (0.15 L) more of inhibitor to fuel tank.
8. Add 6 ounces (0.18 L) of inhibitor to engine crankcase.



9. Disconnect air intake hose from manifold. Pour 2 ounces (0.6 L) of inhibitor into intake system and replace hose. Hold engine stop knob out, and crank engine ONLY a few revolutions. Push stop knob in.



10. Loosen fan belt after it has cooled.



11. Remove and clean batteries. Store them in a cool, dry place, and keep them charged.

2440 Tractor

2640 Tractor

REVERSER

TRANSMISSION:

Type

collar shift transmission with hydraulic-mechanical unit to provide travel direction change without clutching or shifting gears same as collar shift. Reverser usable on I (low) range only.

collar shift transmission with hydraulic-mechanical unit to provide travel direction change without clutching or shifting gears same as collar shift. Reverser usable on I (low) range only.

Gear selections

POWER TAKE-OFF:

Type

fully independent or continuous running 540 rpm or dual speed 540/1000 rpm

Speed*

Size

Clutch

1-3/8 in. (35 mm)
hydraulically-operated, multiple-disk wet clutch. (independent PTO); dual stage, foot-operated dry disk (continuous PTO)

1-3/8 in. (35 mm)
hydraulically-operated, multiple-disk wet clutch. (independent PTO); dual stage, foot-operated dry disk (continuous PTO)

HYDRAULIC SYSTEM

Type

Standby pressure

closed-center, constant-pressure 2250 psi (15514 kPa) (155 bar)

closed-center, constant-pressure 2250 psi (15514 kPa) (155 bar)

BRAKES:

Type

hydraulically-operated wet disk

hydraulically-operated wet disk

ELECTRICAL SYSTEM:

Batteries

one or two 12 volt, 24 group, 370 amps cold cranking, 106 minutes reserve capacity

one 12 volt, 30H group, 580 amps cold cranking, 180 minutes reserve capacity

or:

two 12 volt, 24 group, 370 amps cold cranking, 106 minutes reserve capacity.

Alternator

35-amp

35-amp

DIMENSIONS:

Wheelbase

(Straight front axle)

85.8 in. (2 180 mm)

85.8 in. (2 180 mm)

Wheelbase

(Swept-back front axle)

79.5 in. (2 020 mm)

79.5 in. (2 020 mm)

Overall length

139.5 in. (3 540 mm)

139.5 in. (3 540 mm)

Height to muffler cover**

80.3 in. (2 040 mm)

81.5 in. (2 070 mm)

Height to top of Roll-Gard

89.3 in. (2 27 mm)

89.3 in. (2 27 mm)

Overall width (minimum)

69.5 in. (1 770 mm)

69.5 in. (1 770 mm)

Turning radius

(Straight front axle)

117.6 in. (2 990 mm)

118.6 in. (3 010 mm)

Turning radius

(Swept-back front axle)

114.0 in. (2 900 mm)

115.0 in. (2 920 mm)

SHIPPING WEIGHT***

4800 lbs. (2 177 kg)

5200 lbs. (2 361 kg)

*Tractor without Hi-Lo, 2100 engine rpm. Tractor with Hi-Lo, 2400 engine rpm.

**Tractor equipped with standard equipment.

***Equipped for average field service, without fuel and ballast.

CLICK ANYWHERE FOR MORE DETAILS

MANUAL PREVIEW

JENSALES®

purchase full manual at

JENSALES.COM
or call 800-443-0625

CLICK ANYWHERE FOR MORE DETAILS

Index

CLICK ANYWHERE FOR MORE DETAILS

	Page		Page
A			
Adapter, starting fluid	17	Differential lock	27
Air cleaner	109	Draft links	38
Air cleaner restriction indicator	8	Drawbar	58
Alternator	122	Driving at night	88
Annual service	104	E	
Antifreeze	117	Electrical system service	118
B			
Ballast	69	Engine break-in	11
Batteries	19, 118	Engine difficulties	131
Belt, fan	112	Engine idling	20
Bleeding brakes	123	Engine speeds	20
Bleeding fuel system	115	Engine starting	14
Blocks, sway	34	Ether starting aid	17
Brakes	123, 135	F	
Breakaway couplers	47	"Float" adjustment, implement hitch	32
Breaker, circuit	120	"Float" adjustment, remote cylinder	51
Breaking in engine	11	Front weight	73
Bulbs	121	Front wheel bearings	102
C			
Calcium chloride weight	70, 74	Front wheel toe-in	79
Center link	44	Front wheel tread width	76
Circuit breaker	120	Fuel	94
Clevis, drawbar	60	Fuel filter	97
Cold weather service	117	Fuel gauge	8
Cold weather starting aids	17	Fuel injectors	105
Coolant heater	18	Fuel shut-off valve	106
Cooler, hydraulic oil	116	Fuel system service	115
Cooling system service	116	G	
Coupler, Quik	40	Greases	95
Couplers, breakaway	47	Grille screen	108
Cowl	107	Guard, PTO	62
Cylinder, remote hydraulic	47		

or Call 800-443-0625

CLICK ANYWHERE FOR MORE DETAILS

	Page
H	
Handbrake	23,124
Hand throttle	20
Head lamps	91,121
Heater, engine coolant	18
Highway driving	88
Hitch, implement	36
Hood	108
Hoses, remote hydraulic cylinder	47
Hydraulic pump	18
I	
Idling engine	17
Implement Codes	73
Implement hitch and control systems	28
Indicator lamps	7
Inflation chart	85
Injection pump	105
Instruments	6
K	
Key switch	16
L	
Lamps, sealed-beam	91,121
Leveling implement	44
Lift links	44
Lighting	91
Light switch	91
Liquid wheel weight	70,74
Lubricants	95
Lubrication:	
Axle, front	97
Bearings, front wheel	102
Bearings, rear axle	102
Engine crankcase	96,97,99,100
3-point hitch	100
Transmission-hydraulic system	96,98,101,102,103

	Page
Lubrication, periodic:	
Daily or 10-hour	97
50-hour	98
100-hour	99
200-hour	100
600-hour	101
1200-hour	102
Annual	104
As required	105
M-N	
Master shield	61
Night driving	88
O	
Oil cooler, hydraulic	116
Oil lubricating	95
Oil pressure indicator, engine	6
P-Q	
Periodic service	96
Piston stroke, remote hydraulic cylinder	57
Power take-off	61
PTO-driven implement	64
PTO guard	62
Quik-Coupler	40
R	
Rack and pinion adjustment, rear wheel	82
Radiator	116
Range selector lever	24
Rate of operation, remote hydraulic cylinder	49
Rear wheel tread width	76
Remote cylinder	47
Remote cylinder hoses	47
Remote cylinder levers	50
Rim position on wheel	80,84
Rockshaft	28
Rockshaft control lever	29
Rockshaft selector lever	31

JENSALES.COM

or Call 800-443-0625

CLICK ANYWHERE FOR MORE DETAILS

S

	Page
Safety	2
Screen, side grille	108
Sealed-beam lamps	91
Seat	9
Seat belt	10
Serial numbers	138
Service	107
Service, periodic:	
Air cleaner	105
Batteries	98
Brakes	105
Cooling system	97
Engine speeds	101
Fuel filters	97
Hydraulic system	98,101,102,103
Tires	98
Shield, master	61
Shifting transmission	24
Specific gravity test	120
Specifications	136
Specifications, fuel	94
Specifications, lubricant	95
Speed-hour meter	6
Speed-of-drop, rockshaft	33

Page

Speeds, engine	20
Speeds, travel	26
Starter	16,103,122
Starting aids, cold weather	17
Starting engine	14
Stop, adjustable, remote cylinder	57
Stop, rockshaft control lever	29
Stopping engine	21
Storage, fuel	94
Storage, tractor	128
Sway blocks	34
T	
Tail lamps	91
Temperature gauge	7
Three-point hitch	36
Tire inflation charts	85
Tire service	114
Toe-in, front wheel	79
Towing tractor	89
Tractor storage	128
Transmission-hydraulic system	98,101,102,103
Transmission oil pressure indicator	7
Transmission shifting	24
Travel speeds	26
Tread width, front wheel	76
Tread width, rear wheel	80
Trouble shooting	131

W

Warning lamps	7,92
Water temperature gauge	7
Weight, front	73
Weight, rear wheel	70
Wheels, front	78
Wheels, rear	80

JENSALES.COM

or Call 800-443-0625

CLICK ANYWHERE FOR MORE DETAILS